



PARTIES & VENUE HIRE



MAC'S PARTY FARMYARD



10 Dan Pienaar Drive, Tedderfield, Eikenhof 1872. Google Maps : Macs Party Venue.
Contact 011 9488752/ or 071 599 8272 email: admin@macsvenue.co.za

FARMYARD VENUE HIRE – 2017

The Farmyard venue is exclusive to one party. No sharing of any facilities / No Cleaning up

✚ **Half Day: 3 hours** (10am to 1pm) or (2pm to 5pm). **Fee: R1950 per 3 hours**
Fee includes 20 children & 40 adults. Thereafter fee R25 per child & R15 per adult

✚ **Full day:** (10am to 5pm). **Fee: R2995**
Fee includes 25 children & 50 adults. Thereafter fee R25 per child & R15 per adult

Parties must finish promptly at 1pm or 5pm. We allow you 15 minutes after party to vacate venue

EXTRA OVER TIME: Subject to availability - Not available if another party is booked!

If extra time is available, we will offer you the choice of extra time 20 minutes prior to the end of your party. If you accept extra time option payment must immediately be made in cash

Early start: Venue will be ready for you to set up at 9.30am. Should you require venue earlier an extra **Fee of R95** per 30 minutes is payable. Early start time must be confirmed when booking venue!

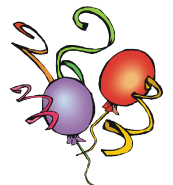
Extra time after 5pm: Fee R300 p/ hour: **Not available if Teenager Party Bash venue is booked!**

To Make a Booking:

- ☆ Please contact us to secure Party date, time and fill in a booking form
- ☆ Venue will only be confirmed on receipt of signed booking form. Please call us to confirm that we have received your booking form.
- ☆ We require a **NON refundable deposit of R1500 for ½ day or R2000 for full day**. Deposit is payable within 5 days after we have received your booking form. Deposit will be deducted from final invoice

Farmyard Venue Hire Fee Includes:

- ∞ 80m2 Indoor hall with CD Sound System & DSTV: Dads can watch sports
- ∞ Kiddies & Adult tables, chairs included in hire. (see item list)
- ∞ We provide 1 x Jumping Castle. Extra castles can be hired
- ∞ Extra shaded area outside with picnic tables & chairs, see optional extras
- ∞ Electric Patio Heater and Outside Bonfire (Bring own wood or purchase wood at tuck-shop)
- ∞ 2 acres of tranquil farm area with farm animals on view during party, Picnic & Braai facilities
- ∞ Circus Jungle Gyms, Volley Ball, Climbing fun on Toby Tractor, Mandy Mini, Fantasy Trains, Cars, etc
- ∞ Traffic land Scooters & Sand pit
- ∞ Secure Parking inside farm area with Security guard at gate.
- ∞ **FREE:** Cups of Tea & Coffee, 1 liter milk & sugar for moms & dads



E-mail Invitations, Plastic Baby pool available on request. At no extra cost

Viewing of venue & facilities: Please book an appointment for venue viewing. We do not allow viewing unless an appointment has been made OR during other clients parties.

VENUES ARE IN HIGH DEMAND. PLEASE BOOK EARLY TO AVOID DISAPPOINTMENT

Special: Weekday Rate at Farm & Fountain includes Schools Outings - not valid on public holidays:

- * Farm or Fountain Venue hire: 4 hours = R980 (30 kids) OR Full day = R1700 – (10am to 4pm) 60 kids
- * Combo Farm & Fountain: 4 hours = R1900 (60 kids) OR Full day = R2800 (10am to 4pm) 80 kids
- * **Brand New Combo Farm & Circus school parties in our big top available – ask us for information**

OPTIONAL EXTRA'S

Can be added to venue hire. Must be booked on confirmation of venue hire! Subject to availability!

- ☆ Extra Jumping castles & waterslide: Hire Fee on request
- ☆ Draping inside hall: Red & Black or Lumo: **Fee R360**
- ☆ Bungy Bouncer: : **Fee R600** for 60 minutes / : **Fee R700** for 120 minutes / : **Fee R950** for 3 hours
- ☆ Pony Rides: **Fee R295** (30 minutes)
- ☆ Trestle Table cover : **Fee @ R20** each
- ☆ Extra Adult chair hire: **Fee @ R6** each
- ☆ Extra Kids Chair hire: **Fee @ R6** each
- ☆ Extra Trestle Tables @ **R35** each
- ☆ Prepared Braai: **Fee R250** We supply 1 bag charcoal, firelight & light the braai & you do the cooking
- ☆ No charge for braai facilities if you supply own charcoal etc
- ☆ **Gas Stove R250.** (2 plate stove)
- ☆ Party Equipment: Pop Corn, Slush Machine, Candy Floss Machine, Soft Serve – **Fee:** on request
- ☆ Party Photographer – on request
- ☆ Kids Table & Chair covers various colours. **Fee on request**



PERFORMANCES / SHOWS & FUN EQUIPMENT HIRE - must be booked in advance:

Our sister companies Duo Sapphire Entertainment Agency & Macs Parties have a comprehensive data bases of Entertainers, Fun & Extreme Equipment hire. Please ask for information and prices

Entertainers: offer a variety of fun filled shows - Comedy Clown, Puppet, Magicians, Circus, Face painters, Balloon Twister and lots more.

Fun & Extreme Equipment for hire –Bungy Bouncers. Trains, Carousels, Mechanical Bull, Water ponds etc

TERMS & CONDITIONS OF HIRING MAC'S PARTY FARMYARD!

Catering: You are allowed to supply all your own catering, cakes and drinks or ask us for catering options

Loud Music: NOT ALLOWED – special arrangements can be made if combo venues are booked

Extra Electricity: Should you require extra electrical plugs for own catering extra fee of R95 per electric item will be applicable

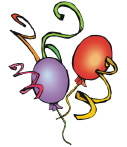
Children Supervision Organizing Parent must take responsibility and supervise all children using equipment & facilities.

See detailed list of all items included and *Not* included in Venue hire on page 5

Manager Our Venue manager will meet & assist you with any unforeseen snags during your party.

Maid: There will be a maid to wash cups & glasses during your party & clean venue after your party

☆ **Special Circus School, Farm outings, Corporate, Fun Day, Team building & Christmas packages on request**



Inquiries & Confirmation

To make an inquiry or confirm booking please call our offices during offices hours or send an email request

Office hours are Monday to Friday 9am to 4pm.

Office is closed and phones are switched off on Saturday, Sundays & Public holidays.

Party Bookings: Open 7 days a week.

Venue manager, maid & security on site for all party bookings

ALL VENUES ARE EXCLUSIVE – NO SHARING. Venues can be hired individually or as combo's.

Ask us for information, specials and prices on our other delightful, fun venues

** **Fountain Spray Fun Venue** - ideal for the summer time with fun spray water elements.

** **Inflatable Fun hire** – only available 15 May to 15 August at special winter rates.

** **Teenage Party Bash** – Teenagers party venue includes disco & laser lights

** **Brand New:** **Circus Parties & Circus School in our delightful Big Top** – Kids become the Circus stars

** **Tailor made Combo packages** available: Fountain & Farm, Farm & Party Bash. Circus & Farm

Contact details: Phone (011) 948 8752. **Office Cell:** 071 599 8272, **Emergency number:** 082 900 4797.

Email: admin@macsvenues.co.za **Website:** www.macsvenues.co.za

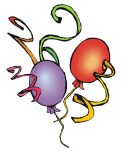


View and like Macs Party Venue

DIRECTIONS:

Mac's Party Venues – Farmyard, Circus Adventures, Party Bash & Fountain Spray Fun

10 Dan Pienaar Drive, Tedderfield Estates, Eikenhof (20 km South of JHB CBD)



GPS: S 26° 20' 20.0" E 027° 58' 09.7

Google Maps: Macs Party Venue

FROM N3 / N12 HEADING TO KIMBERLY / PAST THE GLEN

- N12 towards Kimberly.
- **Take Klipriver** off ramp at top turn left toward Vereeniging.
- **Go straight ±7 km**, till you see Mall of the South on right
- **Turn right** at traffic light by Mall of the South.

Carry on following directions below.

Directions from Brackenhurst / Alberton

- **Go straight** on Swartkoppies Road past Mall of The South. Go 8 km (name changes to Main Road) it is the R554. Go past Kibler Park on right & Waterstone College on left.
- **Turn left at T. Junction** marked R82 Vereeniging.

Carry on following directions below

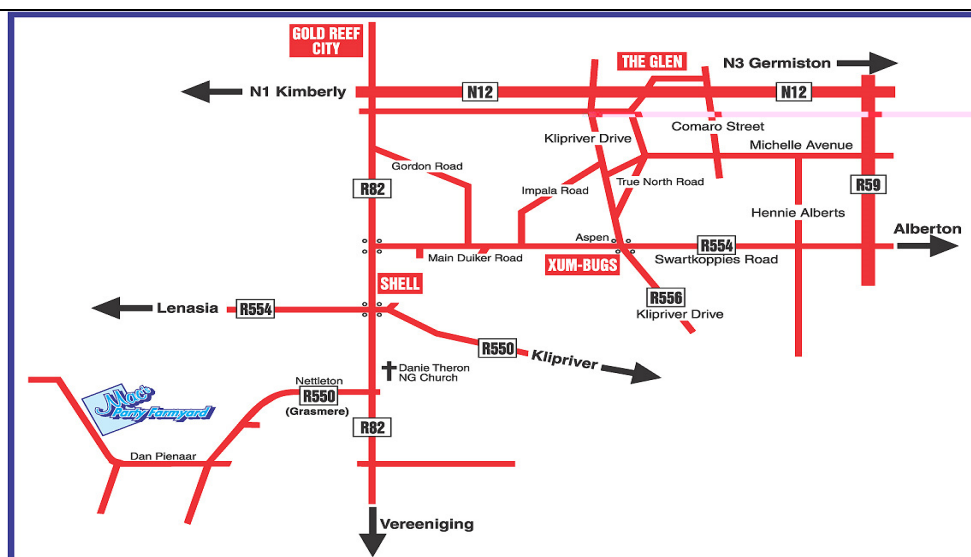
FROM M1 BLOEMFONTEIN HEADING

SOUTH PAST GOLD REEF

- M1 Bloemfontein, go past Booyens, Xavier Street, Gold Reef City Casino.
- After Casino see sign Bloemfontein N1, Vereeniging R82.
- Keep to middle lanes, highway splits keep right.
- See sign Southgate / Vereeniging R82, **keep straight** onto Vereeniging R82
- R82 becomes M27. We are 11 km from here
- Go down hill past Eagles Nest, over traffic light to Kibler Park.

Carry on following directions below

- **Go past** Lido hotel and Shell garage on left.
- **Straight over next traffic light** (Klipriver / Lenasia)
- Exactly 1.5km after traffic light, keep right see Church & sign to Tedderfield airport on left. **Turn right.**
- Go straight for **1 ½km only** , See yellow sign on right, at tar road -Mac's Party Venue sign - **TURN right.**
 - Venue ½ km from here on right.



VENUE ITEM LIST FOR FARMYARD All items Included in venue hire fee

Small Bar Fridge – cannot store Ice Cream Cakes!

1 x Urn

1 x Microwave Oven

2 x Outdoor Braai's

Patio heaters

3 x 1m tables inside venue

2 x plastic catering tables

30 x adult plastic chairs (extra chairs can be hired)

30 x children plastic chairs + 10 x plastic tables for children

4 x (6 seater) outdoor wooden picnic tables and chairs

4 x plastic & steel outdoor picnic tables with 4 chairs per table

2 x plastic baths for drinks

20 x glasses & 30 x plastic kids cups

10 x tea cups + 10 x coffee mugs

TV with DSTV programs

Kiddies

1 x jumping castle.

Plastic scooters

Sand pit, jungle gym & climbing gyms

Venue items - NOT provided- can be hired: Linen, tablecloths, Cutleries & crockery for main meals.

Hot plates, Gas or electric stove, Serving dishes & glass bowls etc

Table cloths for tables – kiddies table cloths and chair covers available as optional extra

We provide FREE Tea, Coffee, Sugar & 1 Liter of Milk ☺



Please remember if extra plug points are required an extra electrical fee of R95 per item will be applicable