



PARTIES & VENUE HIRE



MAC'S PARTY INFLATABLE VENUE

10 Dan Pienaar Drive, Tedderfield, Eikenhof 1872. Google Maps : Macs Party Venue.
Contact 011 9488752/ 071 599 8272 or admin@macsvenue.co.za

INFLATABLE WINTER VENUE HIRE - 2017

We switch off fountains in winter and convert our popular Fountain Venue into a fun filled inflatable venue. Only available Winter time - 15 May to 19 August 2017:

See below Special discounted winter rates

✚ **Winter Time Half Day: 3 hours** (10am to 1pm) or (2pm to 5pm). **Fee: R1250 per 3 hours**
Fee includes 20 children & 40 adults. Thereafter fee R25 per child & R15 per adult

✚ **Winter Time Full day:** (10am to 5pm). **Fee: R2150**
Fee includes 25 children & 50 adults. Thereafter fee R25 per child & R15 per adult

Parties must finish promptly at 1pm or 5pm. We allow you 15 minutes after party to vacate venue

EXTRA OVER TIME: Subject to availability - Not available if another party is booked!

If extra time is available, we you will be offer you the choice of extra time 20 minutes prior to the end of your party. If you accept extra time option payment must immediately be made in cash

Early start: Venue will be ready for you to set up at 9.30am. Should you require venue earlier an extra **Fee of R95** per 30 minutes is payable. Early start time must be confirmed when booking venue!

Extra time after 5pm: Fee R300 p/ hour:

To Make a Booking:

- ☆ Please contact us to secure Party date, time and fill in a booking form
- ☆ Venue will only be confirmed on receipt of signed booking form. Please call us to confirm that we have received your booking form.
- ☆ We require a **NON refundable deposit of R1000 for ½ day or R1800 for full day**. Deposit is payable within 5 days after we have received your booking form. Deposit will be deducted from final invoice

Inflatable Venue Hire Fee Includes:

- ∞ 3 x inflatables & Mini Farmyard
- ∞ Under cover roof area with side awnings (65m2)
- ∞ Kiddies & Adult tables, chairs included in hire. (see item list)
- ∞ Extra Thatched Umbrellas with picnic tables & chairs.
- ∞ Electric Patio Heaters
- ∞ Picnic & Braai facilities
- ∞ Playground with Jungle Gym & swings
- ∞ Secure Parking inside with Security guard at gate.
- ∞ **FREE:** Cups of Tea & Coffee, 1 liter milk & sugar for moms & dads

Viewing of venue & facilities: Please book an appointment for venue viewing. We do not allow viewing unless an appointment has been made OR during other clients parties.

VENUES ARE IN HIGH DEMAND. PLEASE BOOK EARLY TO AVOID DISAPPOINTMENT

Special: Weekday Rate at Farm or Circus includes Schools - not valid on public holidays:

- * Inflatable or Farm Venue hire: 4 hours = R980 (30 kids) OR Full day = R1700 – (10am to 4pm) 60 kids
- * Combo Farm & Inflatable Venue: 4 hours = R1900 (60 kids) OR Full day = R2800 (10am to 4pm) 80 kids
- * **Brand New Combo Farm & Circus school parties in our big top** – ask us for rates

OPTIONAL EXTRA'S

Can be added to venue hire. Must be booked on confirmation of venue hire! Subject to availability!

- ☆ Extra Jumping castles: Fee on request
- ☆ Pony Rides: **Fee** R295 (30 minutes)
- ☆ Kids Table & Chair covers various colours. **Fee** R200 includes setting for 20 kids. Thereafter R6 per cover
- ☆ Trestle Table cover : **Fee** @ R20 each
- ☆ Extra Adult chair: **Fee** @ R6 each
- ☆ Extra Kids Chair: **Fee** @ R6 each
- ☆ Extra Trestle Tables @ R35 each
- ☆ Prepared Braai: **Fee** R250 We supply 1 bag charcoal, firelight & light the braai. You just cook
- ☆ Free use of Braai facilities if you supply own charcoal etc.
- ☆ **Gas Stove** R250. (2 plate stove)
- ☆ Party Equipment: Pop Corn, Slush Machine, Candy Floss Machine, Soft Serve – **Fee:** on request
- ☆ Party Photographer – on request



PERFORMANCES / SHOWS & FUN EQUIPMENT HIRE - must be booked in advance:

Our sister companies Duo Sapphire Entertainment Agency & Macs Parties have a comprehensive data bases of Entertainers, Fun & Extreme Equipment hire. Please ask for information and prices

Entertainers: offer a variety of fun filled shows - Comedy Clown, Puppet, Magicians, Circus, Face painters, Balloon Twister and lots more.

Fun & Extreme Equipment for hire –Bungy Bouncers. Trains, Carousels, Mechanical Bull, Water ponds etc

TERMS & CONDITIONS OF HIRING MAC'S PARTY FARMYARD!

Catering: You are allowed to supply all your own catering, cakes and drinks or ask us for catering options

Loud Music: NOT ALLOWED – special arrangements can be made if combo venues are booked

Extra Electricity: Should you require extra electrical plugs for own catering extra fee of R95 per electric item will be applicable

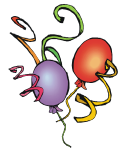
Children Supervision Organizing Parent must take responsibility and supervise all children using equipment & facilities. FOUNTAINS DO NOT HAVE LIFE GAURD

See detailed list of all items included and *Not* included in Venue hire on page 5

Manager Our Venue manager will meet & assist you with any unforeseen snags during your party.

Maid: There will be a maid to wash cups & glasses during your party & clean venue after your party

☆ **Special Circus School, Farm outings, Corporate, Fun Day, Team building & Christmas packages on request**



Inquiries & Confirmation

To make an inquiry or confirm booking please call our offices during office hours or send an email request
Office hours are Monday to Friday 9am to 4pm.

Booking Office is closed and phones are switched off on Saturday, Sundays & Public holidays.

Venue manager, maid & security on site for all party bookings

ALL VENUES ARE EXCLUSIVE – NO SHARING. All Venues can be hired individually or as combo's.

Ask us for prices & information on our other venues for hire:

**** Farm Venue** – our oldest and most popular venue

**** Fountain Spray Venue hire** – only available 1 January to 15 May or 20 August to 31 December

**** Teenage Party Bash** – Teenagers dream party venue includes disco & laser lights

**** Brand New: Circus Parties in our delightful Big Top** – Your child will be the star of the circus show

**** Tailor made Combo packages available:** Fountain & Farm, Farm & Party Bash. Circus & Farm

Contact details: Phone (011) 948 8752. **Office Cell:** 071 599 8272 **Emergency number:** 082 900 4797.

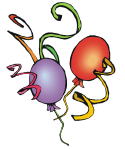
Email: admin@macsvenues.co.za **Website:** www.macsvenues.co.za



View and like Macs Party Venue



DIRECTIONS:



Mac's Party Venues – Farmyard, Circus Adventures, Party Bash & Fountain Spray Fun

10 Dan Pienaar Drive, Tedderfield Estates, Eikenhof (20 km South of JHB CBD)

GPS: S 26° 20' 20.0" E 027° 58' 09.7

Google Maps: Macs Party Venue

FROM N3 / N12 HEADING TO KIMBERLY / PAST THE GLEN

- N12 towards Kimberly.
- **Take Klipriver** off ramp at top turn left toward Vereeniging.
- **Go straight ±7 km**, till you see Mall of the South on right
- **Turn right** at traffic light by Mall of the South.

Carry on following directions below.

Directions from Brackenhurst / Alberton

- **Go straight** on Swartkoppies Road past Mall of The South. Go 8 km (name changes to Main Road) it is the R554. Go past Kibler Park on right & Waterstone College on left.
- **Turn left at T. Junction** marked R82 Vereeniging.

Carry on following directions below

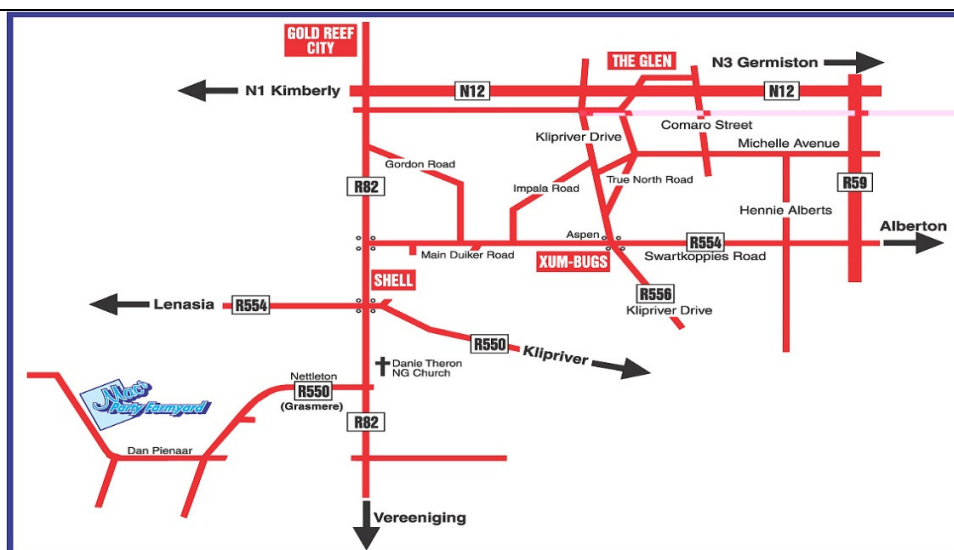
FROM M1 BLOEMFONTEIN HEADING

SOUTH PAST GOLD REEF

- M1 Bloemfontein, go past Booyens, Xavier Street, Gold Reef City Casino.
- After Casino see sign Bloemfontein N1, Vereeniging R82.
- Keep to middle lanes, highway splits keep right.
- See sign Southgate / Vereeniging R82, **keep straight** onto Vereeniging R82
- R82 becomes M27. We are 11 km from here
- Go down hill past Eagles Nest, over traffic light to Kibler Park.

Carry on following directions below

- **Go past** Lido hotel and Shell garage on left.
- **Straight over next traffic light** (Klipriver / Lenasia)
- Exactly 1.5km after traffic light, keep right see Church & sign to Tedderfield airport on left. **Turn right.**
- Go straight for **1 ½km only** , See yellow sign on right, at tar road -Mac's Party Venue sign - **TURN right.**
 - Venue ½ km from here on right.



VENUE ITEM LIST FOR FOUNTAIN SPRAY VENUE All items Included in venue hire fee

Small Bar Fridge – cannot store Ice Cream Cakes!

1 x Kettle or Urn

1 x Microwave Oven

1 x Outdoor Braai's

Patio heaters

2 x 1m tables inside venue

2 x plastic catering tables

10 x adult plastic chairs (extra chairs can be hired)

30 x children plastic chairs + 10 x plastic tables for children

2 x (6 seater) outdoor wooden picnic tables and chairs

2 x plastic baths for drinks

20 x glasses & 20 x plastic kid's cups

10 x tea cups + 10 x coffee mugs

TV with DSTV programs

Venue items - NOT provided- can be hired: Linen, tablecloths, Cutleries & crockery for main meals.

Hot plates, Gas or electric stove, Serving dishes & glass bowls etc

Table cloths for tables – kiddies table cloths and chair covers available as optional extra

We provide FREE Tea, Coffee, Sugar & 1 Liter of Milk 😊

Please note if extra plug points are required an extra electrical fee of R95 per item will be applicable

