



PARTIES & VENUE HIRE



MAC'S PARTY BASH VENUE

10 Dan Pienaar Drive, Tedderfield, Eikenhof 1872. Google Maps : Macs Party Venue.
Contact 011 9488752 / 071 599 8272 or admin@macsvenues.co.za



TEENAGER PARTY BASH DISCO VENUE HIRE - 2017



- ✚ **Party Bash Venue Hire:** Evening (6.30pm to 11pm) **Fee: R2995**
Fee includes 100 guests. Thereafter fee R25 per person
- ✚ **Party Bash Venue Hire:** Afternoon & Evening (2pm to 11pm) **Fee: R3650**
Fee includes 150 guests. Thereafter fee R25 per person
- ✚ **Optional Extra DJ Hire:** Please ask us for rates and information on DJ hire

Music must be switched off promptly at 10.30pm.

We allow you 20 minutes after party to vacate venue

EXTRA OVER TIME: Not available

To Make a Booking:

- ☆ Please contact us to secure Party date, time and fill in a booking form
- ☆ Venue will only be confirmed on receipt of signed booking form. Please call us to confirm that we have received your booking form.
- ☆ We require a **NON refundable deposit of R2000**. Deposit is payable within 5 days after we have received your booking form. Deposit will be deducted from final invoice

Party Bash Hire Fee Includes:

- ∞ 80m2 Indoor hall
- ∞ Disco Lights including UV blaster & strobe lights. PLEASE ADVISE IF ANY GUESTS SUFFER EPILEPSY
- ∞ Tables & chairs
- ∞ Braai, Picnic & Bonfire Facilities
- ∞ Extra Under cover roof area with side awnings (65m2)
- ∞ Secure Parking inside with Security guard at gate.
- ∞ **FREE:** Cups of Tea & Coffee, 1 liter milk & sugar for moms & dads

Viewing of venue & facilities: Please book an appointment for venue viewing. We do not allow viewing unless an appointment has been made OR during other clients parties.

VENUES ARE IN HIGH DEMAND. PLEASE BOOK EARLY TO AVOID DISAPPOINTMENT

OPTIONAL EXTRA'S

Can be added to venue hire. Must be booked on confirmation of venue hire! Subject to availability!

- ☆ Trestle Table cover : **Fee @ R20 each**
- ☆ Extra Adult chair: **Fee @ R6 each**
- ☆ Extra Kids Chair: **Fee @ R6 each**
- ☆ Extra Trestle Tables @ R35 each
- ☆ Draping Red & Black or Lumo @ R360
- ☆ Prepared Braai: **Fee R250** We supply 1 bag charcoal, firelight & light the braai. You just cook Braai yourself: No charge. Free use of venue braai's
- ☆ **Gas Stove R250. (2 plate stove)**
- ☆ Party Equipment: Pop Corn, Slush Machine, Candy Floss Machine, Soft Serve – **Fee:** on request
- ☆ Party Photographer – on request



PERFORMANCES / SHOWS & FUN EQUIPMENT HIRE - must be booked in advance:

Our sister companies Duo Sapphire Entertainment Agency & Macs Parties have a comprehensive data bases of Entertainers, Fun & Extreme Equipment hire. Please ask for information and prices

Entertainers: offer a variety of fun filled shows – Fire eaters, Jugglers, Comedy Clown, Magicians, Circus, Face painters, Balloon Twister and lots more.

Fun & Extreme Equipment for hire –Bungy Bouncers. Trains, Carousels, Mechanical Bull, Water ponds etc

TERMS & CONDITIONS OF HIRING MAC'S PARTY FARMYARD!

Catering: You are allowed to supply all your own catering, cakes and drinks or ask us for catering options

Extra Electricity: Should you require extra electrical plugs for own catering extra fee of R95 per electric item will be applicable

Children Supervision Organizing Parent must take responsibility and supervise all children

See detailed list of all items included and Not included in Venue hire on page 5

Manager Our Venue manager will meet & assist you with any unforeseen snags during your party.

☆ **Special Circus School, Farm outings, Corporate, Fun Day, Team building & Christmas packages on request**

Inquiries & Confirmation

To make an inquiry or confirm booking please call our offices during office hours or send an email request

Office hours are Monday to Friday 9am to 4pm.

Booking Office is closed and phones are switched off on Saturday, Sundays & Public holidays.

Party Times: Open 7 days a week

Venue manager & security on site for all party bookings

ALL VENUES ARE EXCLUSIVE – NO SHARING. All Venues can be hired individually or as combo's.

Ask us for prices & information on our other venues for hire:

**** Farm Venue – our oldest and most popular venue**

**** Fountain Spray Venue hire – only available 1 January to 15 May or 20 August to 31 December**

**** Teenage Party Bash – Teenagers dream party venue includes disco & laser lights**

**** Brand New: Circus Parties in our delightful Big Top – Your child will be the star of the circus show**

**** Tailor made Combo packages available: Fountain & Farm, Farm & Party Bash. Circus & Farm**

Contact details: Phone (011) 948 8752. Office Cell: 071 599 8272, Emergency number: 082 900 4797.

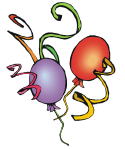
Email: admin@macsvenues.co.za Website: www.macsvenues.co.za



View and like Macs Party Venue



DIRECTIONS:



Mac's Party Venues – Farmyard, Circus Adventures, Party Bash & Fountain Spray Fun

10 Dan Pienaar Drive, Tedderfield Estates, Eikenhof (20 km South of JHB CBD)

GPS: S 26° 20' 20.0" E 027° 58' 09.7

Google Maps: Macs Party Venue

FROM N3 / N12 HEADING TO KIMBERLY / PAST THE GLEN

- N12 towards Kimberly.
- **Take Klipriver** off ramp at top turn left toward Vereeniging.
- **Go straight ±7 km**, till you see Mall of the South on right
- **Turn right** at traffic light by Mall of the South.

Carry on following directions below.

Directions from Brackenhurst / Alberton

- **Go straight** on Swartkoppies Road past Mall of The South. Go 8 km (name changes to Main Road) it is the R554. Go past Kibler Park on right & Waterstone College on left.
- **Turn left at T. Junction** marked R82 Vereeniging.

Carry on following directions below

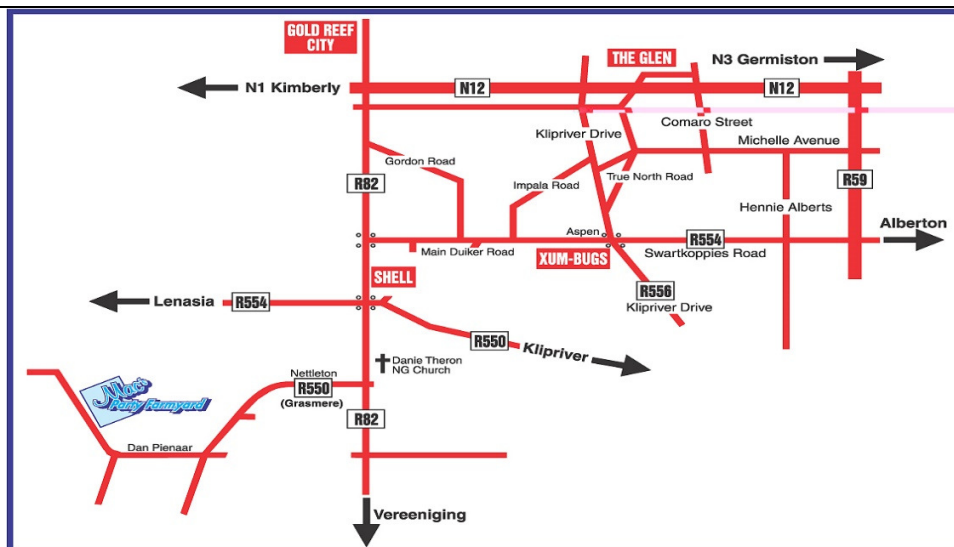
FROM M1 BLOEMFONTEIN HEADING

SOUTH PAST GOLD REEF

- M1 Bloemfontein, go past Booyens, Xavier Street, Gold Reef City Casino.
- After Casino see sign Bloemfontein N1, Vereeniging R82.
- Keep to middle lanes, highway splits keep right.
- See sign Southgate / Vereeniging R82, **keep straight** onto Vereeniging R82
- R82 becomes M27. We are 11 km from here
- Go down hill past Eagles Nest, over traffic light to Kibler Park.

Carry on following directions below

- **Go past** Lido hotel and Shell garage on left.
- **Straight over next traffic light** (Klipriver / Lenasia)
- Exactly 1.5km after traffic light, keep right see Church & sign to Tedderfield airport on left. **Turn right.**
- Go straight for **1 ½km only** , See yellow sign on right, at tar road -Mac's Party Venue sign - **TURN right.**
 - Venue ½ km from here on right.



VENUE ITEM LIST FOR PARTY BASH All items Included in venue hire fee

Small Bar Fridge – cannot store Ice Cream Cakes!

1 x Kettle or Urn

1 x Microwave Oven

1 x Outdoor Braai's

Patio heaters

2 x 1m tables inside venue

2 x plastic catering tables

10 x adult plastic chairs (extra chairs can be hired)

30 x children plastic chairs + 10 x plastic tables for children

2 x (6 seater) outdoor wooden picnic tables and chairs

2 x plastic baths for drinks

20 x glasses & 20 x plastic kid's cups

10 x tea cups + 10 x coffee mugs

TV with DSTV programs



Venue items - NOT provided- can be hired: Linen, tablecloths, Cutleries & crockery for main meals.

Hot plates, Gas or electric stove, Serving dishes & glass bowls etc